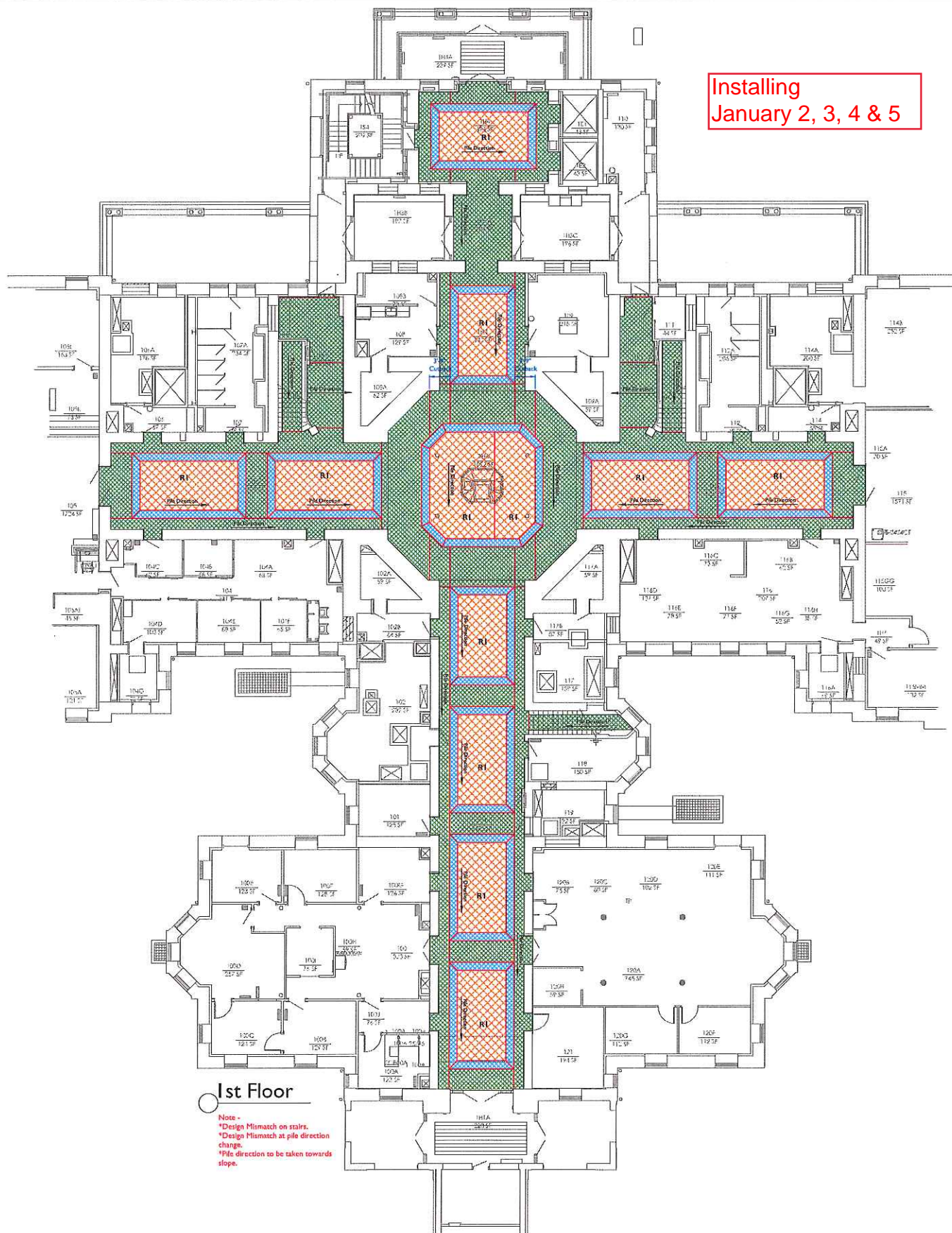


## Installing January 2, 3, 4 & 5

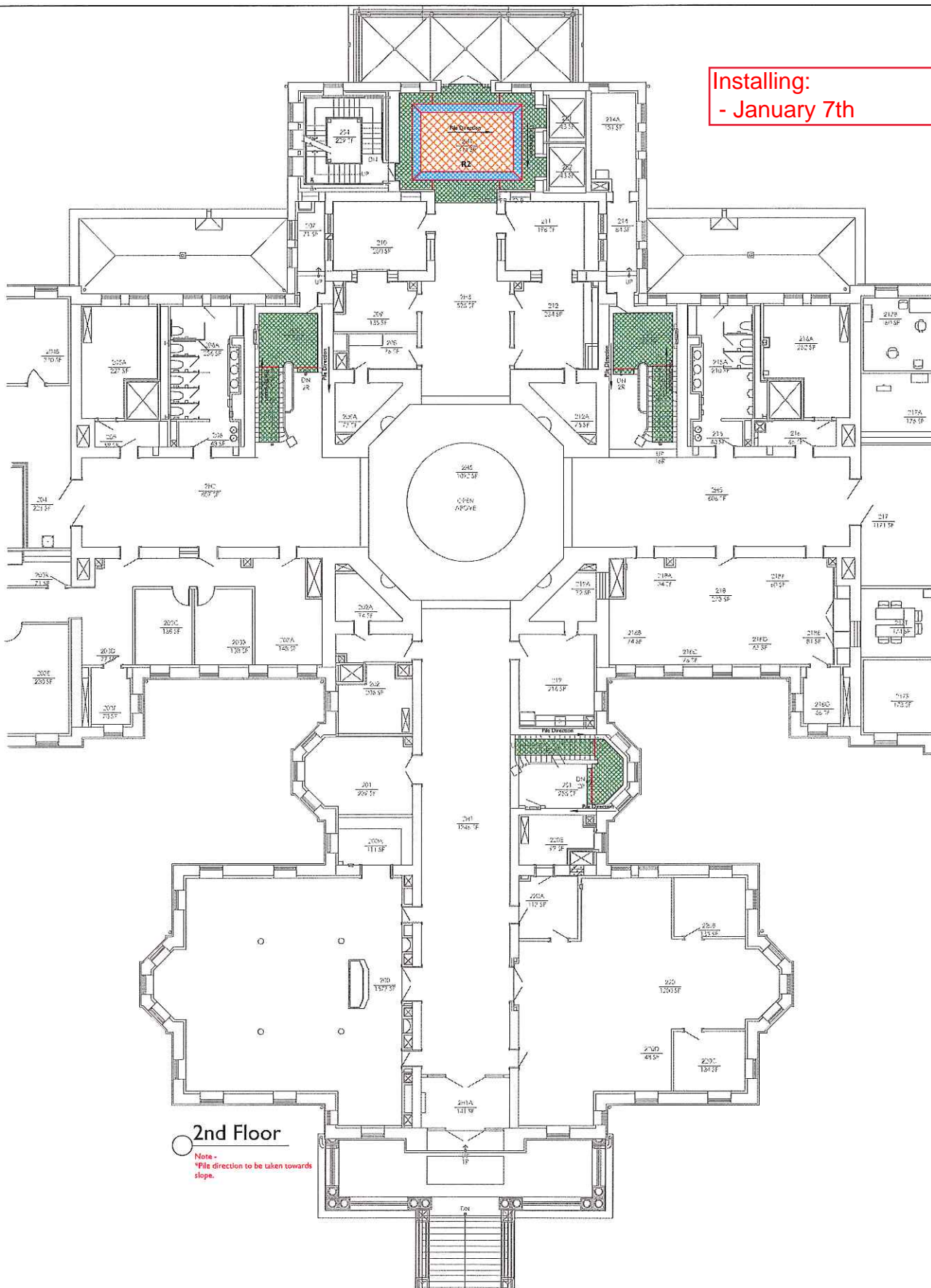


1st Floor

Note -

- \*Design Mismatch on stairs.
- \*Design Mismatch at pile direction change.
- \*Pile direction to be taken towards slope.

Installing:  
- January 7th

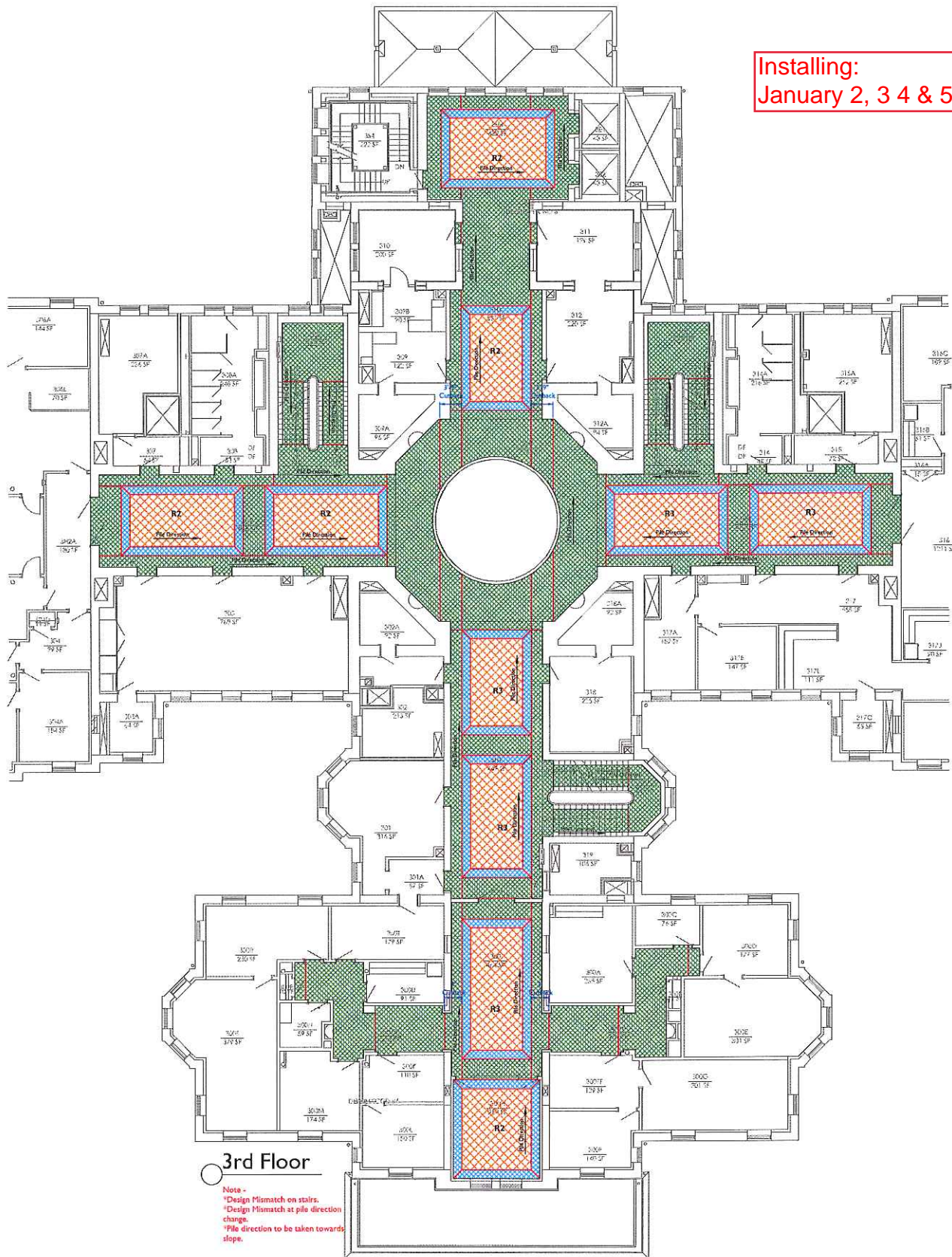


2nd Floor

Note -  
\*File direction to be taken towards  
slope.

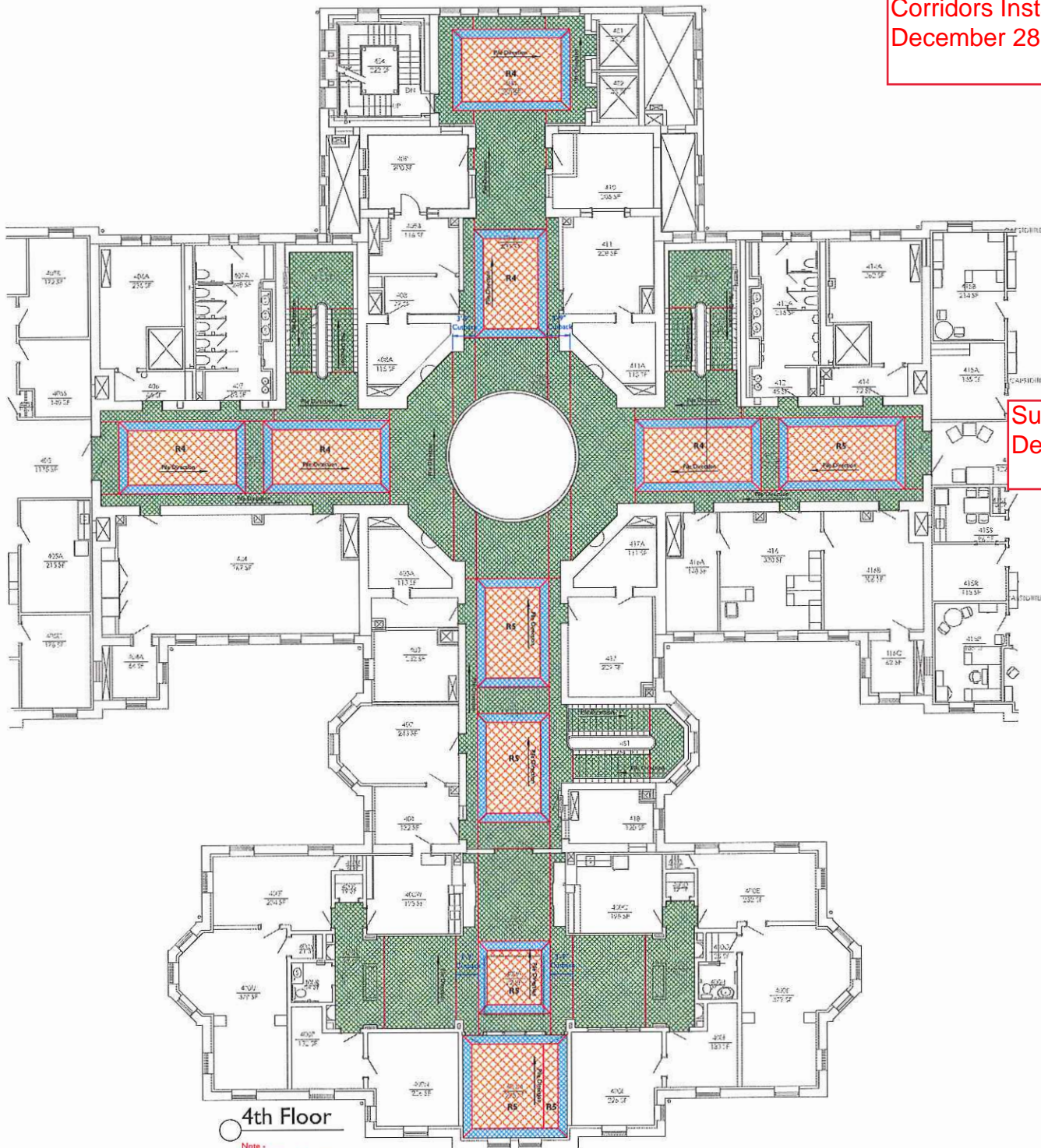


Installing:  
January 2, 3 4 & 5



Corridors Installing:  
December 28, 29, 30 & 31

Suite 415 Installing  
December 21 - 31



4th Floor  
Note -  
\*Design Mismatch on stairs.  
\*Design Mismatch at pile direction change.



Installing:  
December 28, 29, 30 & 31

